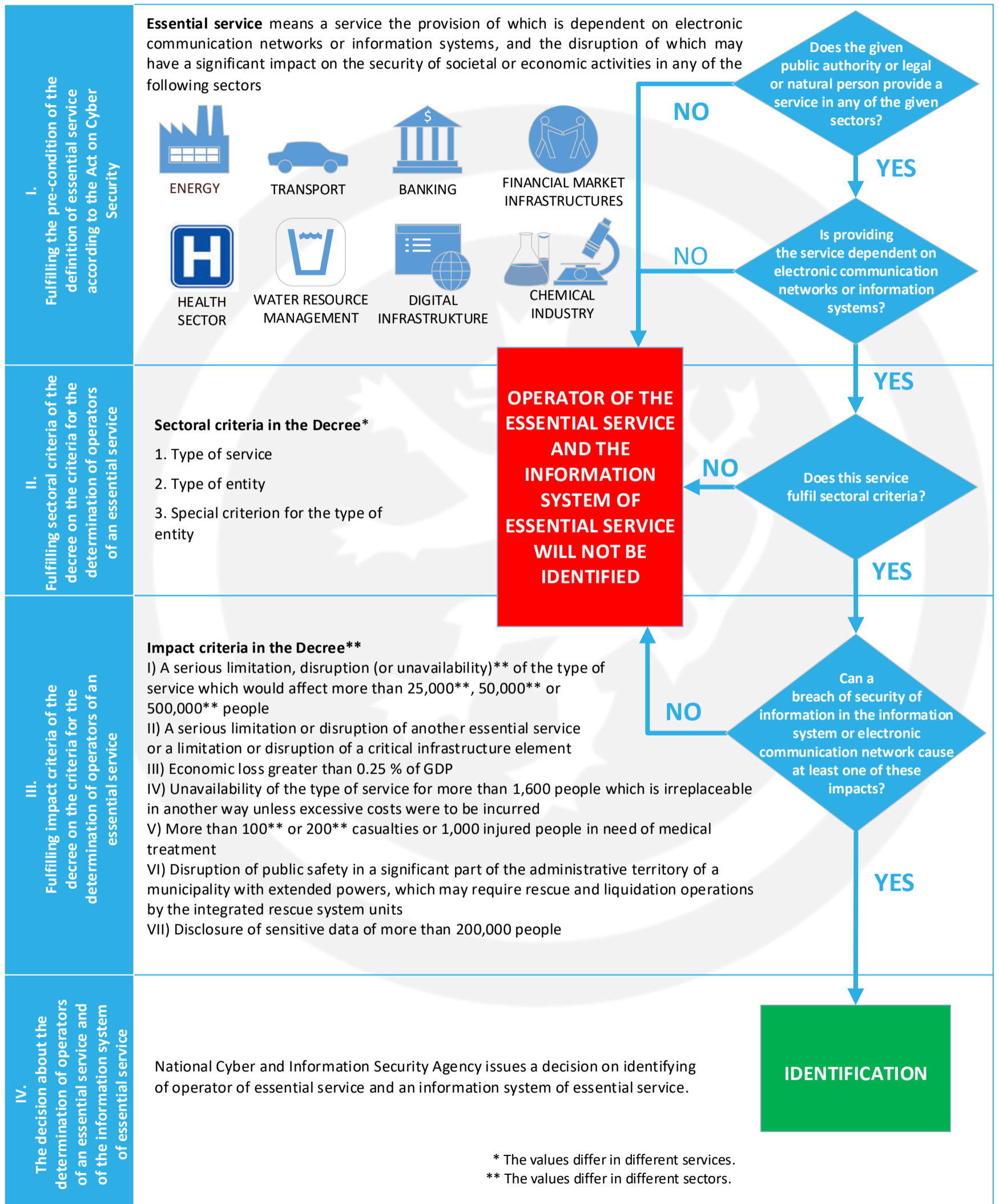




The process of the operators of essential service and the information system of essential service identification according to the Act on Cyber Security and to the Decree on the criteria for the determination of an operator of essential service



\* The values differ in different services.  
 \*\* The values differ in different sectors.

**Note:**

**This document is only a supporting guide and does not replace any act or implementing legislation. The right to make changes to this document reserved. This document is non-binding English translation.**